

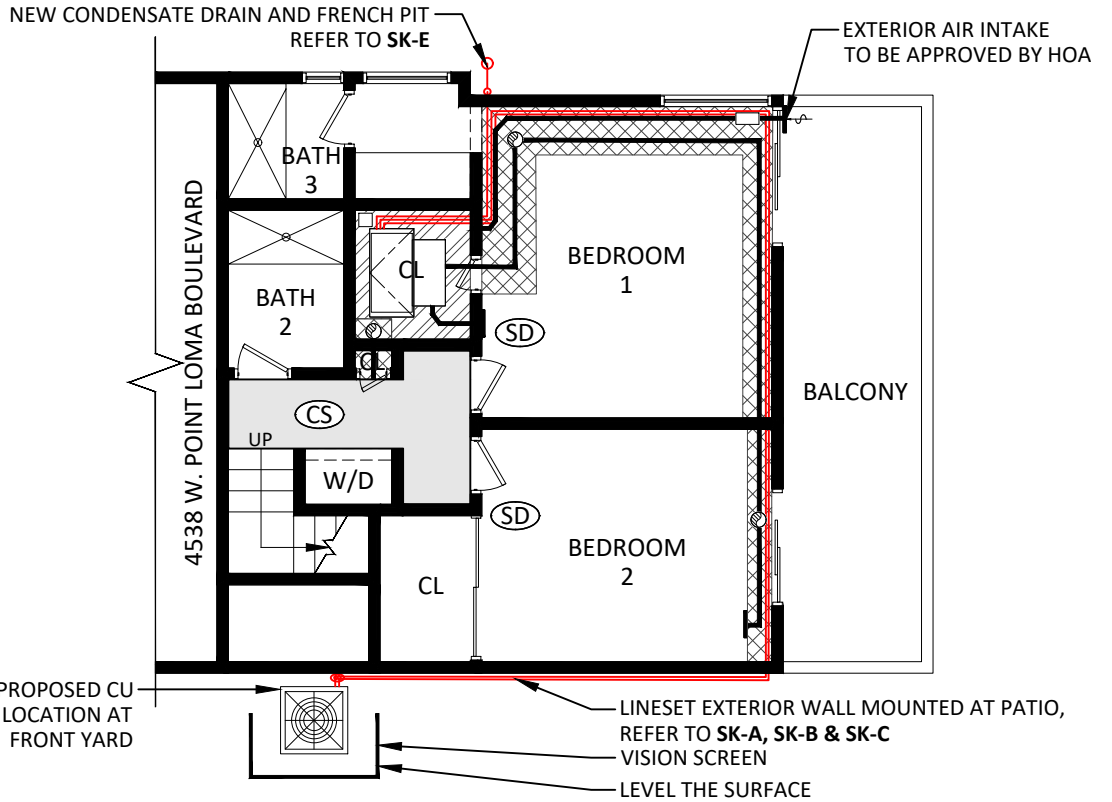
**PLAN NOTES**

**PROPOSED MECHANICAL DESIGN - LOWER & FIRST FLOOR PLAN**

FAN COIL IN DROPPED CEILING

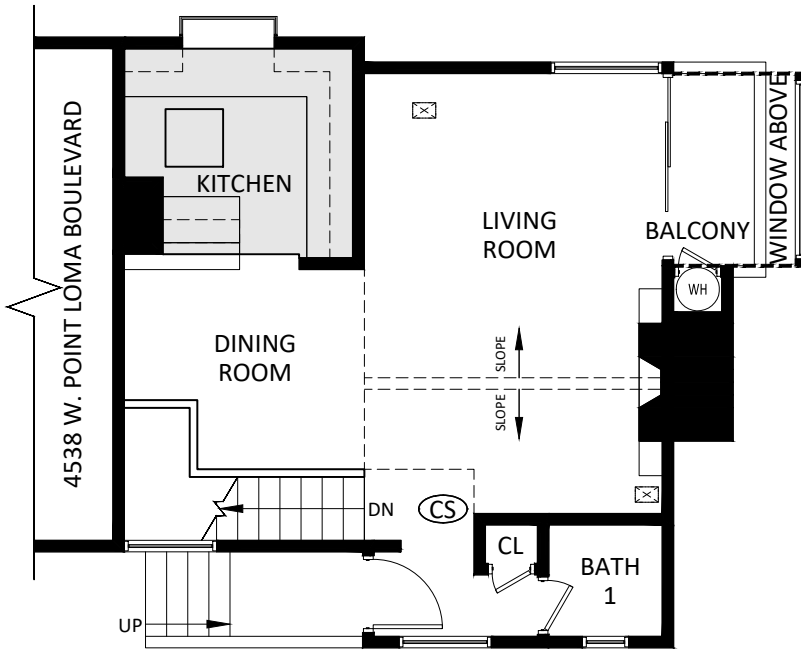
**NOTES:**

1. HOMEOWNERS TO APPROVE INTERIOR HVAC DESIGNS.
2. MECHANICAL DESIGN MAY VARY PER UNIT.



**LOWER FLOOR PLAN**

SCALE: NTS



**FIRST FLOOR PLAN**

SCALE: NTS

**UNITS:**

4532, 4536, 4550 & 4544

**REVERSED FLOOR PLAN UNITS:**

4534, 4538, 4542 & 4546

**NOTES:**

1. COORDINATE ALL NEW WORK ITEMS WITH MECHANICAL AND ELECTRICAL SCOPE OF WORK.
2. EXISTING WATER HEATER TO REMAIN.
3. EXISTING SMOKE DETECTORS AND CARBON MONOXIDE DETECTORS TO REMAIN.

**SAN DIEGO COUNTY REGIONAL AIRPORT AUTHORITY - GROUP 14.12 NH**

RES#: 381411.00

DATE: 06/2026

INITIAL(S):

SHEET:

**WEST POINT LOMA HOA COMMON AREA**  
 4532 - 4578 W. POINT LOMA  
 SAN DIEGO, CA 92107

