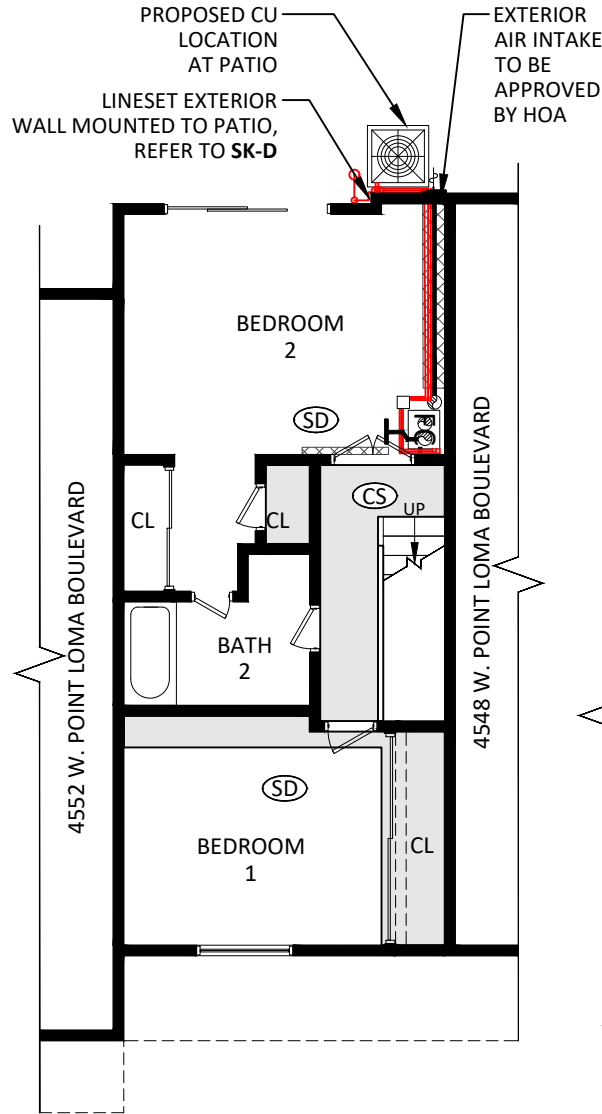


**PLAN NOTES**

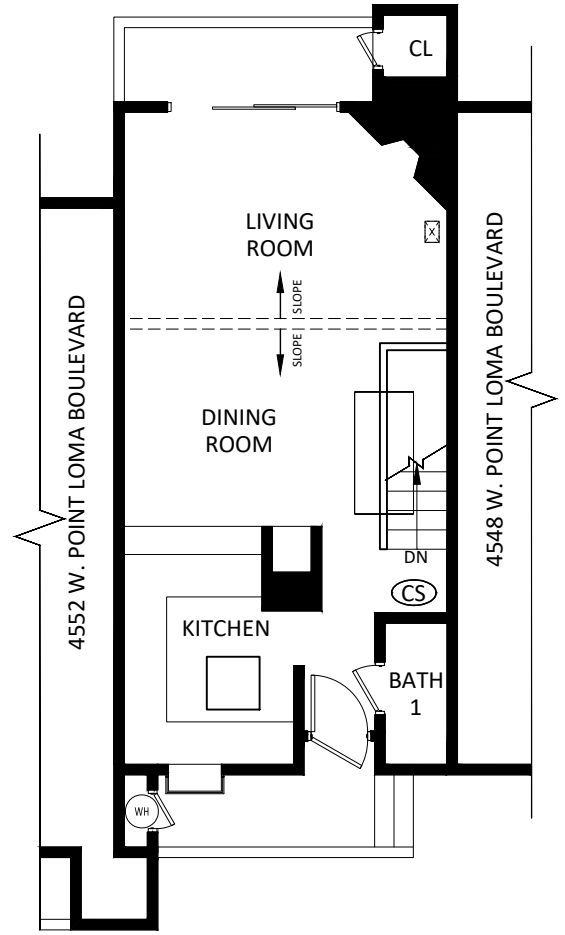
**PROPOSED MECHANICAL DESIGN - LOWER & FIRST FLOOR PLAN**

FAN COIL IN NEW CLOSET AT BEDROOM 2

- NOTES:**
1. HOMEOWNERS TO APPROVE INTERIOR HVAC DESIGNS.
  2. MECHANICAL DESIGN MAY VARY PER UNIT.



**LOWER FLOOR PLAN**   
SCALE: NTS



**FIRST FLOOR PLAN**   
SCALE: NTS

- NOTES:**
1. COORDINATE ALL NEW WORK ITEMS WITH MECHANICAL AND ELECTRICAL SCOPE OF WORK.
  2. EXISTING WATER HEATER TO REMAIN.
  3. EXISTING SMOKE DETECTORS AND CARBON MONOXIDE DETECTORS TO REMAIN.

**UNITS:**  
4550, 4554, 4558, 4566, 4570 & 4574  
**REVERSED FLOOR PLAN UNITS:**  
4552, 4556, 4560, 4568, 4572 & 4576

**SAN DIEGO COUNTY REGIONAL AIRPORT AUTHORITY - GROUP 14.12 NH**

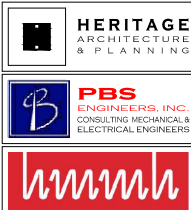
RES#: 381411.00

DATE: 06/2026

INITIAL(S):

SHEET:

**WEST POINT LOMA HOA COMMON AREA**  
4532 - 4578 W. POINT LOMA  
SAN DIEGO, CA 92107



**SPECIAL CONDITIONS : SK-D**



LINESET OUT FROM SOFFIT

OUTSIDE AIR APPROX. LOCATION

WALL MOUNTED LINESET TO PATIO WITH LINESET COVER FOR MECHANICAL EQUIPMENT

PROPOSED CONDENSING UNIT LOCATION AT PATIO

**NOTES:**

1. REFER TO **BUILDING SITE PLAN** FOR CONDENSING UNITS LOCATIONS.
2. IMAGE SHOWN IS FOR REFERENCE ONLY.

**PROPOSED CONDITIONS AT UNIT 4552 (EXTERIOR)  
UNITS 4548, 4556, 4560, 4564, 4568, 4572 & 4576 (SIMILAR)**



OUTSIDE AIR APPROX. LOCATION

LINESET OUT FROM SOFFIT

WALL MOUNTED LINESET TO PATIO WITH LINESET COVER FOR MECHANICAL EQUIPMENT

PROPOSED CONDENSING UNIT LOCATION AT PATIO

**PROPOSED CONDITIONS AT UNIT 4554 (EXTERIOR)  
UNITS 4550, 4558, 4562, 4566, 4570, 4574 & 4574 (SIMILAR)**

**SAN DIEGO COUNTY REGIONAL AIRPORT AUTHORITY - GROUP 14.12 NH**

RES#: 381411.00

DATE: 06/2026

INITIAL(S):

SHEET:

**WEST POINT LOMA HOA COMMON AREA  
4532 - 4578 W. POINT LOMA  
SAN DIEGO, CA 92107**

